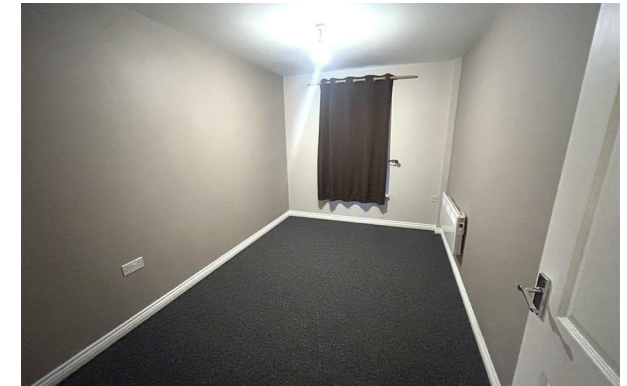


THE HOME AGENCY

'Passion for property'



Flat 12, Rossetti Court Byron Road, Eastleigh, Hampshire, SO50 4FL

£1,250 Per Calendar Month

- Two Bedroom
- Modern Kitchen
- Allocated parking
- Large Lounge
- Modern Bathroom
- Sought After location
- Master bedroom En Suite
- Ground Floor

Directions

Viewings

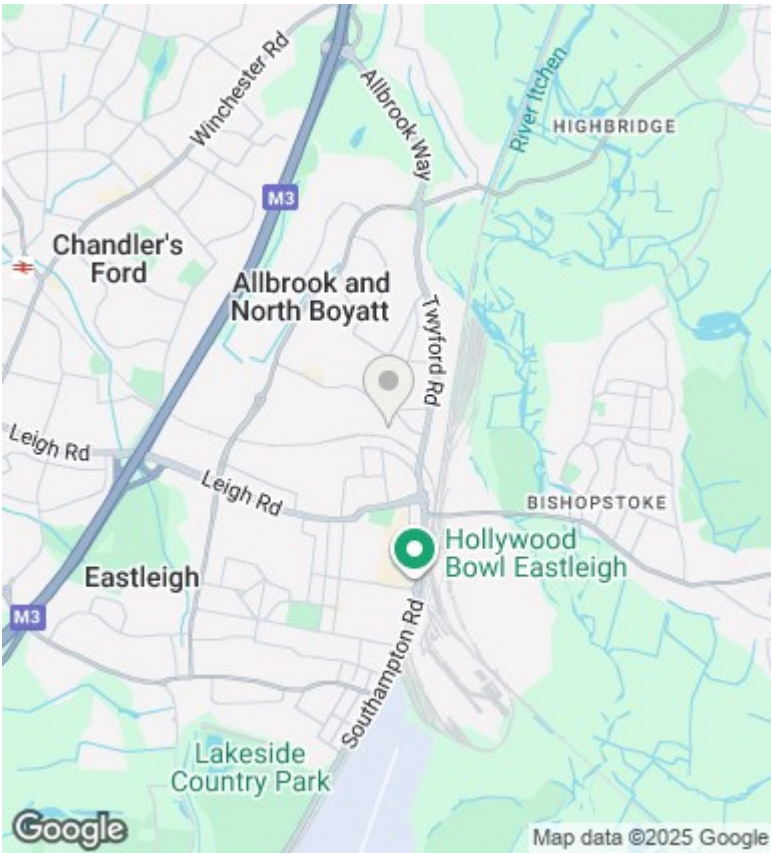
Viewings by arrangement only. Call 02380 632632 to make an appointment.

Council Tax Band

B

EPC Rating:

B



Energy Efficiency Rating		
	Current	Potential
Very energy efficient - lower running costs		
(92 plus) A		
(81-91) B	82	82
(69-80) C		
(55-68) D		
(39-54) E		
(21-38) F		
(1-20) G		
Not energy efficient - higher running costs		
England & Wales	EU Directive 2002/91/EC	